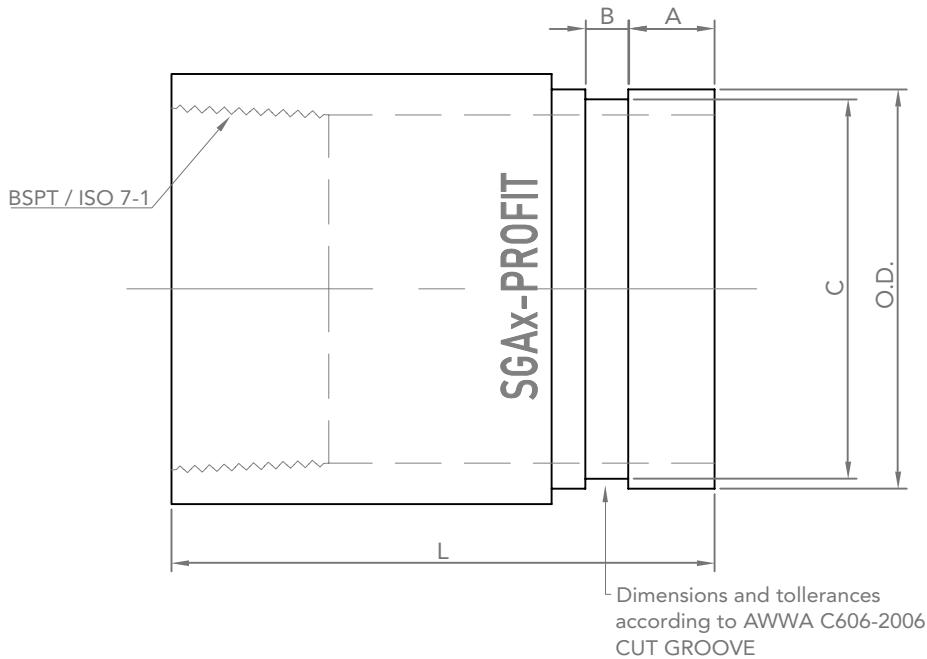


Size range: 1" - 4"



Socket grooved adapters allow the connection between threaded and grooved end equipment.

Reference		Nominal size		Pipe Ø O.D.	Dimensions and tolerances according to AWWA C606-2006 cut groove				Weight	Marking
Black uncoated	Zinc electroplated	NPS inch	DN mm	mm	L mm	A mm	B mm	C mm	kg	
SGA1 - BLACK	SGA1 - GALVA	1	25	33,7	75	15,9	7,9	30,2	0,21	SGA
SGA1¼ - BLACK	SGA1¼ - GALVA	1¼	32	42,4	100	15,9	7,9	39,0	0,37	SGA
SGA1½ - BLACK	SGA1½ - GALVA	1½	40	48,3	100	15,9	7,9	45,1	0,47	SGA
SGA2 - BLACK	SGA2 - GALVA	2	50	60,3	100	15,9	7,9	57,2	0,56	SGA
SGA2½ - BLACK	SGA2½ - GALVA	2½	65	76,1	100	15,9	7,9	72,3	0,73	SGA
SGA3 - BLACK	SGA3 - GALVA	3	80	88,9	100	15,9	7,9	84,9	0,80	SGA
SGA4 - BLACK	SGA4 - GALVA	4	100	114,3	100	15,9	9,5	110,1	1,54	SGA

#### Material specifications

- Body: carbon steel
- Surface finish: black uncoated / zinc electroplated (any other colour, powdercoated, on request).

#### Working pressure

2,07 MPa / 20,7 bar / 300 psi.

## GENERAL INFO

- Installers should be trained or experienced to install and understand the product.
- Read and understand all technical datasheets and installation instructions before attempting to install, remove or adjust any Profit piping products.
- Depressurise and drain the sprinkler installation system before attempting to install, remove or adjust any Profit piping products.
- Never work on piping systems that are pressurised and / or filled with water.
- Piping Logistics reserves the right to change specifications, designs and / or standard equipment without notice and without incurring in any obligations.
- Use the necessary Personal Protection Equipment (PPE) to avoid personal injury (helmet, safety shoes and goggles, Profit gloves).



- Maximum working pressure listed is the total of internal and external pressures based on standard weight (ANSI) steel pipe and standard roll or cut groove in accordance with Profit specifications. For more information, please contact [info@pipinglogistics.eu](mailto:info@pipinglogistics.eu).
- For one time field test only, the maximum joint working pressure may be increased by 150% the figure shown.

**Failure to follow these instructions could result in death or serious injury and property damage.**

**We advise to always store our products in closed and dry environments, the products do not need any specific maintenance once installed on an above ground sprinkler installation.**

## REVISION TABLE

Date	△	Notes
07/01/2026		New design.